

# Roxtec SF transit with SE PPS

Transit for multiple plastic pipes.

The Roxtec SE PPS with SF is an extension of a standard Roxtec transit for protection of multiple plastic pipe penetrations against the risk of fire. The seal allows for a mix of pipe materials (metal and plastic) and in some cases cables within the same opening. The transit frame has a flange which simplifies welding to unprecise holes. The standard sealing modules are adaptable to cables and pipes of different sizes and can be used to build in spare capacity in the transit.



- Easy to maintain and inspect

Product characteristics



Fire rated



Watertight



Gas-tight

Structure of installation



Metal

Mounting type



Welding

## Ratings & certificates

Fire

- A-CLASS according to IMO 2010 FTP Code

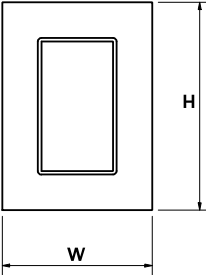
Tightness

- Gas: 2.5 bar (catastrophic)
- Water: 4 bar (catastrophic)

## Frame dimensions

mm/kg

The frame variants below are a limited selection. For the full range of frames and configurations, please visit [roxtec.com](https://www.roxtec.com).



Product	Frame openings	Packing space	External dimensions WxHxD	Aperture dimensions w x h	Weight	Art. no
SF 6x1 ALU	1	120 x 180	260.5 x 358 x 60	201(+15/-15) x 298(+15/-15)	2.9	SFF6000000131
SF 6x2 ALU	2	120 x 180	391 x 358 x 60	332(+15/-15) x 298(+15/-15)	4.2	SFF6000000231
SF 6x3 ALU	3	120 x 180	521.5 x 358 x 60	462(+15/-15) x 298(+15/-15)	6	SFF6000000331
SF 6x1 PRIMED	1	120 x 180	260.5 x 358 x 60	201(+15/-15) x 298(+15/-15)	7.6	SFF6000000112
SF 6x2 PRIMED	2	120 x 180	391 x 358 x 60	332(+15/-15) x 298(+15/-15)	12	SFF6000000212
SF 6x3 PRIMED	3	120 x 180	521.5 x 358 x 60	462(+15/-15) x 298(+15/-15)	16.4	SFF6000000312
SF 6x1 AISI316	1	120 x 180	260.5 x 358 x 60	201(+15/-15) x 298(+15/-15)	8.2	SFF6000000121
SF 6x2 AISI316	2	120 x 180	391 x 358 x 60	332(+15/-15) x 298(+15/-15)	12.2	SFF6000000221
SF 6x3 AISI316	3	120 x 180	521.5 x 358 x 60	462(+15/-15) x 298(+15/-15)	16.6	SFF6000000321



# Sealing components

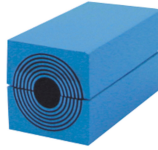
## Sealing components



Lubricant



Wedge & Wedgekit



RM module with  
Multidiameter™



RM solid compensation  
module



Stayplate



SE PPS extension frame



Holder tools



Sealing kit



Welding tools

For detailed information, please visit [roxtec.com](https://www.roxtec.com).

The product information provided by Roxtec does not release the purchaser of the Roxtec system, or part thereof, from the obligation to independently determine the suitability of the products for the intended process, installation and/or use.

Roxtec gives no guarantee for the Roxtec system or any part thereof and assumes no liability for any loss or damage whatsoever, whether direct, indirect, consequential, loss of profit or otherwise, occurred or caused by the Roxtec systems or installations containing components not manufactured by an authorized manufacturer and/or occurred or caused by the use of the Roxtec system in a manner or for an application other than for which the Roxtec system was designed or intended.

Roxtec expressly excludes any implied warranties of merchantability and fitness for a particular purpose and all other express or implied representations and warranties provided by statute or common law. User determines suitability of the Roxtec system for intended use and assumes all risk and liability in connection therewith. In no event shall Roxtec be liable for indirect, consequential, punitive, special, exemplary or incidental damages or losses.

The Roxtec products are offered and sold in accordance with the conditions of the Roxtec General Terms of Sales. The latest version of the Roxtec General Terms of Sales can be downloaded from <https://www.roxtec.com/en/about-us/about-roxtec/general-terms-of-sales/>

We reserve the right to make changes to the product and technical information without further notice. Any errors in print or entry are no claims for indemnity. The content of this publication is the property of Roxtec International AB and is protected by copyright.

This document was generated on: 2024-04-05